

100-PIECE LIMITED-EDITION WATCH MADE OF DAMASCUS STEEL.

1800 S DAMASZENER





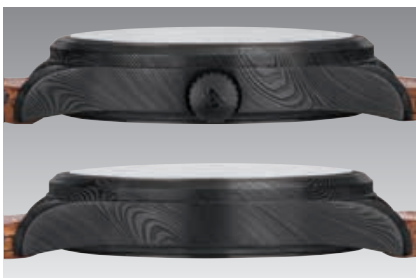
1800 S DAMASZENER with a middle-brown vintage-look cowhide strap. ø 43 mm (Fig.: 1:1)



1800 S DAMASZENER with black calfskin strap. ø 43 mm (Fig.: 1:1)



The watch comes in a fine wooden case with a middle-brown vintage-look cowhide strap, a black calfskin strap, a band replacement tool, spare spring bars, an Eschenbach watchmaker's magnifying glass, a care cloth and a brochure.



Back view and side views of the **1800 S DAMASZENER**. (Figures: 1:1)

1800 S DAMASZENER **100-piece limited-edition watch made of Damascus steel.**

Case with integrated dial in Damascus steel

Case made with Black Hard Coating on a TEGIMENT Technology basis

Limited to 100 pieces

Damascus steel case back

Case back made with Black Hard Coating on a TEGIMENT Technology basis

Sapphire crystal glass

Meticulously appliquéés

Pressure-resistant up to 10 bar (= 100 m water depth)

Resistant to low pressure

Where functionality defines design and every little detail serves to highlight the innovative technology at play, this is where Sinn Spezialuhren is at work. Since our establishment in 1961, we focused continuously on high-quality mechanical watches combining a traditional sense of quality with advanced solutions. This has repeatedly resulted in the use of totally new watchmaking materials. In 1995, we presented the first watch made of 22-carat yellow gold with a material hardness equal to that of stainless steel (220 HV). In 2005, German Submarine Steel was used for the first time in diving watches.

Our 1800 S model made of Damascus steel (ger.: Damaszener Stahl) seamlessly follows on from this by rendering the highly traditional material appropriate for watch cases – without forsaking but rather enhancing its special allure.

The watch thus displays a uniqueness that is immediately reflected in its design and appearance. In order to bring the characteristics textures of Damascus steel to the fore – an organic pattern of alternating bands of light and dark – the dial and central part of the case are forged from a complete steel block rather than designed as separate components, as is customary. The result is rather remarkable: for the Damascus pattern on the dial continues across the entire case to create a fascinating and impressive whole. Thanks to the use of TEGIMENT Technology and the application of an additional black hard coating, we have succeeded in combining functionality with high quality. The Black Hard Coating displays the pattern in a subtle, exquisite light and ensures good readability and a masculine-looking watch.



1800 S DAMASZENER – luminous. (Fig.: 1:1)



On the **1800 S DAMASZENER** model, the dial and the central part of the case are forged from a complete block of steel. The signature Damascus pattern found on the dial – an interplay of light and dark lines – continues across the entire case.

Damascus steel has fascinated humankind for centuries. It gained its legendary reputation above all in the making of swords, knives and blades. Damascus steel is a combination of at least two different types of steel, layered to create the aforesaid surface design.

The traditional art of making Damascus steel is very elaborate and portrays a unique blend of craftsmanship and application. During production, the different types of steel are layered and forge-welded together.

The piece is then forged, halved while in a glowing state and layered together again. Experts refer to this as 'folding'. By combining soft and hard steels, a new kind of steel is created, one which displays properties of both. In the final stage of production, the Damascus pattern is made visible through surface etching. The steels are dissolved to varying extents by acid, thus forming the typical light and dark nuances.

In this respect, it is important to know that the use of Damascus steel in the making of watch cases is particularly challenging with regard to corrosion resistance. In order to find a professional solution, we adapt recent developments in materials engineering. For the case of our 1800 S DAMASZENER model, the different steels used are combined using powder metallurgy and, in this sense, technically optimised.

Also during production of the 1800 S DAMASZENER, the layered structure is made visible through final surface etching, which gives the material its characteristic appearance. Each watch thus becomes an extraordinary and unique timepiece, as the flow of lines cannot be physically manipulated.



Surface etching is used to reveal the layered structure. Each watch is a unique timepiece, as the flow of lines cannot be physically manipulated.



The additional Black Hard Coating displays the layered structure and the Damascus pattern in a subtle and exquisite light.



Sinn

SPEZIALUHREN ZU FRANKFURT AM MAIN

Headquarters:

Im Földchen 5-7 · 60489 Frankfurt/Main
Phone +49(0) 69. 97 84 14-200 · Fax -201

Römerberg branch:

Römerberg 34 · 60311 Frankfurt/Main
Phone +49(0) 69. 97 84 14-650 · Fax -651

www.sinn.de · vertrieb@sinn.de