

*Sinn*

SPEZIALUHREN ZU FRANKFURT AM MAIN

# HUNTING WATCH 3006

THE CHRONOGRAPH WITH MOONLIGHT DISPLAY



## Man and hunting

Hunting played a fundamental role in human history. It was purely by hunting and gathering food that prehistoric human beings ensured their survival. The earliest historical references to the targeted hunting of prey date back to Homo erectus. A valuable source of nutrition, this prey was essential for survival. Hunting thus played a crucial role in the evolution of mankind – and forms one of the most important foundations of human culture.

## Hunting and conservation go hand in hand

Although hunting was originally all about catching wild animals for food, times have now changed and now it means something different. These days, the more commonplace interpretation of hunting is gamekeeping, a practice which also forms an important and obligatory part of hunting law. Gamekeeping refers to the process of protecting and ensuring the conservation of our wildlife, promoting biological diversity and good health while safeguarding natural resources. With all sorts of conservation measures, such as habitat conservation and habitat networks, hunters are helping to maintain rare ecosystems and creating spaces for threatened species to thrive in our intensively farmed landscapes. So as far as the environment is concerned, hunting is beneficial for the ecosystem, and hunting and conservation are inextricably linked.

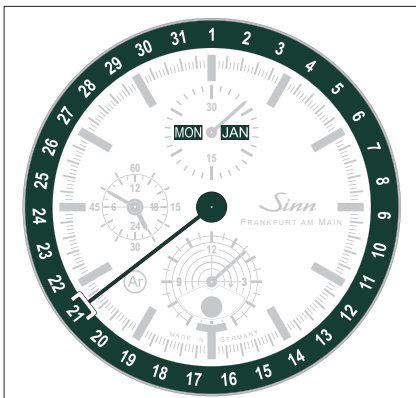


The assembly of the winding rotor completes the exquisitely decorated movement of the HUNTING WATCH 3006. The delicate hands, the dial and the moon disc are ready for assembly.

## A robust, precise instrument for time measurement

With its high-quality features, the HUNTING WATCH 3006 meets the demands of a robust and accurate instrument for time measurement. Particularly due to the SINN technologies used, it is ideal for professional hunting and thus an indispensable piece of hunting equipment. These kinds of technology make the watch remarkably robust and ensure that it has a high degree of mechanical stability. For example, Ar-Dehumidifying Technology ensures greater functional reliability and freedom from fogging. The satinised surface of the stainless-steel case has also been hardened using TEGIMENT Technology, making it especially scratch-resistant. The watch is also pressure-resistant to 20 bar and resistant to low pressure.

### Full calendar



The full calendar on the HUNTING WATCH 3006 displays the day of the week and the month, and includes a centre-mounted date hand.

### Time display



The seconds hand and the hand for the 24-hour display with integrated day and night separation is located at 9 o'clock in the counter.

### Chronograph/stopwatch



The counter for the stopwatch hour is located at 6 o'clock and the counter for the stopwatch minute is at 12 o'clock. The stopwatch seconds are displayed with the hand from the dial centre.

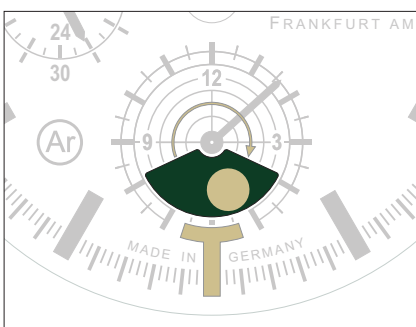


Precision craftsmanship down to the finest detail: attaching the moon disc on the HUNTING WATCH 3006 also requires the ultimate concentration.

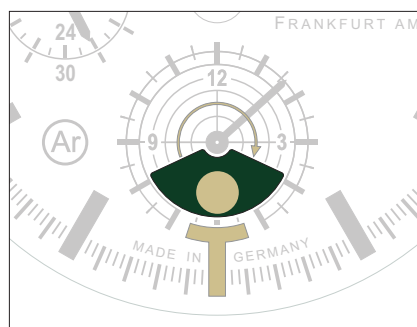
### Read the full moon period with the HUNTING WATCH 3006

The best natural light for hunting at night is between three days before and after full moon, although the brightness of the moon does also depend on the weather. The moonlight display on the HUNTING WATCH 3006 allows hunters to optimally gauge when the best hunting light will be, allowing them to instantly read the full moon period at a glance. The curved yellow arrow in the stylised hairline cross indicates the direction in which the moon disc is moving.

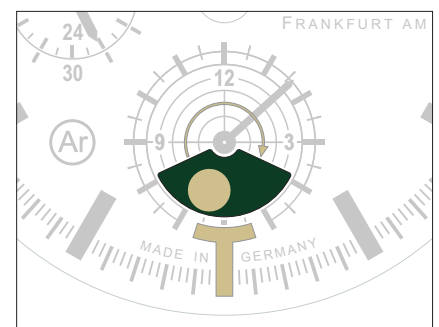
### The moonlight display in the full moon period



Display three days before full moon



Full moon display



Display three days after full moon

This functionality is supported by the watch's outstanding readability. The indices and moon symbol are fully luminous. The time and moonlight display are thus perfectly readable, even in the darkness.



**HUNTING WATCH 3006**, shown here with a green silicone strap. Expandable folding safety clasp. ø 44 mm (Fig.: 1:1)



**HUNTING WATCH 3006**, shown here with a vintage-style cowhide strap. ø 44 mm (Fig.: 1:1)



**HUNTING WATCH 3006**, shown here with a satinised solid fine-link bracelet made of stainless steel with TEGIMENT technology. ø 44 mm (Fig.: 1:1)



Back view and side views of the **HUNTING WATCH 3006**. (Fig.: 1:1)



**HUNTING WATCH 3006** - luminous. (Fig.: 1:1)

## HUNTING WATCH 3006

The chronograph with moonlight display.

Case made of satinised stainless steel

Case with TEGIMENT Technology, particularly scratch-resistant

Ar-Dehumidifying Technology ensures greater functional reliability and freedom from fogging

Sapphire crystal glass on both sides

Moonlight display at 6 o'clock

24-hour display with integrated day and night display

Centre-mounted date hand

Day of the week and month display

Pressure-resistant to 20 bar

Resistant to low pressure

Moonlight stalking with the HUNTING WATCH 3006. The HUNTING WATCH 3006 is the first of our watches to feature this extraordinary complication. The moonlight display has been purposefully positioned at 6 o'clock, with a luminous moon symbol to ensure it is easy to see, even in the dark. The story behind this additional function: hunters not only need a clear, open view for a successful hunt; they also need the right light. Hunters refer to the right lighting conditions for stalking as good hunting light. The German federal hunting law (Bundesjagdgesetz) prohibits the practice of hunting with the aid of artificial light sources (section 5, § 19, paragraph 5 a). In order to be able to hunt the authorised types of game at night-time, there must be adequate natural lighting from the moonlight. The moonlight display on the HUNTING WATCH 3006 shows when the moon is shining bright enough to see and catch the game.

*Sinn*

SPEZIALUHREN ZU FRANKFURT AM MAIN

Wilhelm-Fay-Straße 21 · 65936 Frankfurt/Main  
Tel +49 (0)69 97 84 14-200 · www.sinn.de  
Fax +49 (0)69 97 84 14-201 · vertrieb@sinn.de